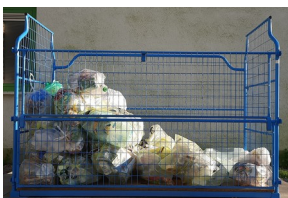


How do I separate my waste?



Organic Waste

- ✓ fruit and vegetable waste
- eggshells
- leftovers
- kitchen greases
- spoiled food
- bread, cereal products
- meat, sausages
- coffee grounds, tea bags
- kitchen paper towels
- milk product leftovers, e. g.
 - cheese
 - curd
 - yogurt
- vegetable waste, e. g.
 - flowers
 - greenery

- ✗ coffee capsules
- ashes
- cigarette butts
- packaging
- vacuum cleaner bag
- plastic bag

- ★ Dispose in bags made of paper or biodegradable plastic (Keimling logo)

Yellow Bag

- ✓ plastic packaging
- plastic wrap
- beverage carton packaging
 - milk cartons
 - juice bags
- styrofoam
- tinplates, e.g.
 - tin cans
 - beverage cans
 - crown caps
 - screw caps
- aluminium
- spray cans (empty)

- ✗ deposit bottles
- batteries

- ★ Please unscrew the caps from the bottles and throw them loosely into the bag

Paper

- ✓ All packaging from
 - paper
 - cardboard
 - carton

- ✗ beverage carton packaging
- plastic bags
- residual waste

- ★ Larger packaging must be shredded

Glass

- ✓ Glass
 - brown glass
 - green glass
 - white glass

- ✗ Porcelain and ceramics
- light bulbs
- fluorescent lamps
- window glass

- ★ Separate by color
- Blue/red glass to green glass
- remove caps

Bulky Waste

- ✓ furniture
- interior design
- mattresses
- household goods
- garden furniture and equipment
- bicycles

- ✗ electrical appliances
- illuminants

Residual Waste

- ✓ hygiene articles
- tissues
- vacuum cleaner bags
- raw animal kitchen waste
- cooled ashes
- napkins
- residues of medication

- ✗ Everything that can be disposed of via the other ways, e.g.
 - Organic Waste
 - Yellow Bag
 - Paper
 - Glass
 - Bulky Waste

- ★ Should be the smallest amount of waste to be disposed of.

Netto:

- ✓ batteries

Recycling Center:

- ✓ paints, solvents
- plant protection products
- old colors

- car batteries
- fluorescent lamps
- energy saving lamps

- electrical appliances
- printer cartridges