

Maierhofstraße



Location:	quiet residential area, 20 accommodations
Construction:	1981
Living structure:	<p>Type 1: 1 accommodation with its own kitchenette and bathroom</p> <p>Type 2: 19 accommodations as 2-, 8- and 9-person shared flats (2-9 tenants share the kitchen and, depending on the size, one or more bathrooms)</p>
Rent:	€ 234,- to € 289,-
Caretaker:	mhs-pa@stwno.de

Bräugasse



Location:	Old town on the Danube quay, 95 accommodations
Construction:	19th Century
Living structure:	<p>Type 1: 4 accommodations with kitchenette and bathroom</p> <p>Type 2: 7 shared flats for 2 (2 tenants share a kitchen area and bathroom)</p> <p>Type 3: 1 shared flat for 4 (4 tenants share a kitchen area and bathroom)</p> <p>Type 3: 73 accommodations with their own bathroom and shared kitchen (4-13 tenants share the kitchen area)</p>
Rent:	€ 269,- to € 539,-
Caretaker:	bg-pa@stwno.de

Impressionen



Living in
Passau



... made easy

Dear students,

welcome to Passau. The Studierendenwerk Niederbayern/Oberpfalz would like to help you with your search for a suitable accommodation.

In this leaflet, you can get a brief overview of the four residential complexes with a total of 716 accommodations provided by the Studierendenwerk.

All accommodations are furnished and offer Internet access. Bicycle parking spaces are available in all residential complexes. Washing machines and dryers can be used jointly. The rental prices are „rent including heating“, i.e. including all-inclusive operating costs (e.g. electricity, water, heating, garbage fees, internet supply, etc.). The non-interest-bearing security deposit (colloquially deposit) is currently € 350,-.

There are handicapped-friendly accommodations for mobility-impaired students in the residential complex Donau-Schwaben-Straße and Leonhard-Paminger-Straße.

Students from all over the world live in the student residences of the Studierendenwerk. Tutors shape the coexistence and organize events to make friends. Social and cultural life takes place in the common rooms of the residential complexes.

For more information, please contact the Student Housing Department:

Tel.: +49 (0)851 509-1903,-1922, wohnen-pa@stwno.de

Photo galleries and detailed descriptions of the residential complexes are available on our website at:

www.stwno.de/en/housing/wohnanlagen-pa-en

You can apply online for a place to live at any time at:
www.stwno.de/bewerbung



Publisher:

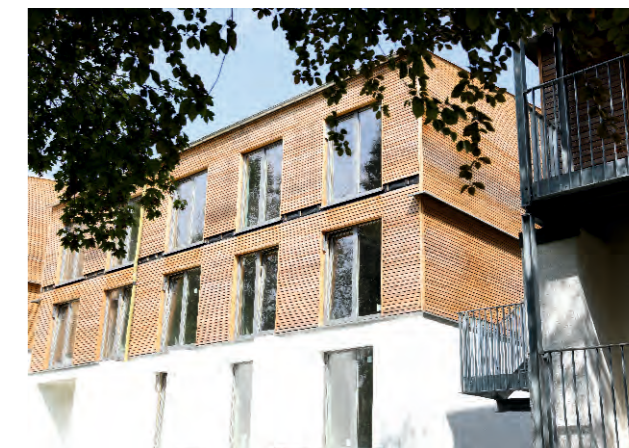
Studierendenwerk Niederbayern/Oberpfalz
Anstalt des öffentlichen Rechts
Albertus-Magnus-Straße 4
93053 Regensburg
www.stwno.de/en

Donau-Schwaben-Straße



Location:	quiet residential area, 245 accommodations
Construction:	1994
Living structure:	Type 1: 2 disabled-friendly accommodations as 2-person shared flats (2 tenants share a kitchen area and a bathroom) Type 2: 240 accommodations as 2-, 3-, 6- and 8-person shared flats (2-3 tenants share a bathroom and 2-8 tenants share a kitchen area) Type 3: 3 shared flats for 3 (3 tenants share a kitchen area and bathroom)
Rent:	€ 276,- to € 366,-
Caretaker:	dss-pa@stwno.de

Leonhard-Paminger-Straße



Location:	quiet residential area, 356 accommodations after renovation and extension
Construction:	1987, refurbishment since 2021
Living structure:	Type 1: 348 accommodations with their own bathroom and shared kitchen (3-8 tenants share the kitchen area) Type 2: 8 disabled-friendly accommodations with their own bathroom and shared kitchen (6 tenants share the kitchen area)
Rent:	Type 1: € 353,- to € 398,- Type 2: € 442,- to € 463,-
Caretaker:	lps-pa@stwno.de